

Ci160ER



Architectural Speaker

OBSESSED WITH HIGH RESOLUTION

Product Overview

The KEF Ci160ER is a high performance speaker designed for in-ceiling and flush mount installations. It's a coincident point source design featuring KEF's proprietary "sit-anywhere" Uni-Q® technology with a driver array that includes a 16mm high frequency aluminium tweeter mounted in the acoustic centre of the 160mm low frequency woofer. The Ci160ER meets IP64 certification requirements and is specifically engineered to deliver exceptional acoustic performance in a value oriented package. The ABS assembly, Ultra-Thin Bezel and grille, are UV protected to withstand continued operation in direct sunlight. The KEF Ci160ER is the ideal choice for foreground, background, and announcement applications in hotels, convention centres, and other commercial venues.



Key Features

KEF "Sit-anywhere" Uni-Q® Technology – This proprietary driver array places the tweeter in the acoustic centre of the woofer delivering wide dispersion with consistent sound characteristics throughout the space. Because the high and low frequencies originate from the same point, acoustic lobing problems common to other speaker designs are virtually eliminated allowing fewer speakers to deliver smooth coverage across a wide listening area.

Weather Resistant – Manufactured using a proprietary plating and powder coating process, the KEF Ci160ER is UV protected and designed to withstand the harshest operating environments.

Magnetic Grille – For security and ease of installation the grille attaches by a powerful magnetic circuit and can be painted to match any décor.

Universal cut-out – All KEF 160mm round in-ceiling speakers utilise the same diameter opening for ease of installation and flexible component selection.

IP64 Certification – The speaker passed official IEC testing to ensure that splashing water would have no harmful effects on assembly components.

Architect and Engineer Specifications

The speaker shall be designed for in-ceiling and flush mount installations and utilise a coincident point source design with the high frequency tweeter mounted in the centre of the low frequency woofer.

The speaker shall consist of a 160mm low frequency woofer and a 16mm aluminium dome high frequency tweeter mounted in a UV protected ABS baffle with a paintable bezel of no more than 5mm in width. The grille shall also be paintable, include a paint shield, and attach by a powerful magnetic circuit for ease of installation and security. The speaker design shall be open back and deliver a minimum frequency response of 52Hz-20kHz +/- 6 dB. The speaker shall not weigh more than 1.4kg.

The nominal impedance of the speaker shall be 8 ohms and it must achieve a minimum pressure sensitivity of 89 dB SPL at 1 meter on-axis with an input of 2.83 volts. The crossover frequency between the woofer and tweeter shall be 2.8kHz. The speaker shall meet numerous safety and performance standards listed by regulatory bodies around the world.

The speaker shall be the KEF Ci160ER.

Specifications

Model	Ci160ER	
Series	E Series	
Nominal impedance	8Ω	
Sensitivity (2.83V/1m)	89dB	
Frequency response (±6dB) open-backed	52Hz - 20kHz	
Frequency range (-10dB)	46Hz - 45kHz	
Nominal coverage (degrees)	110°	
Max SPL (dB)	104dB	
Crossover frequency	2.8kHz	
Drive units	LF	160mm (6.5in.) Uni-Q
	HF	16mm (0.6in.)
Recommended amplifier power	10 - 100W	
Recommended high-pass filter (Hz)	50Hz	
Product external dimensions	Diameter Ø	234.6mm (9.24in.)
	Depth	88.7mm (3.49in.)
Cut-out dimensions	Diameter Ø	196mm (7.71in.)
Net weight	1.4kg (3.1lbs)	
Mounting depth from surface	85.2mm (3.35in.)	
Optional rough in frame	RIF160R	
Optional rear enclosure	RNC160R	
Ideal rear volume (L)	35L	
Minimum rear volume (L)	20L	
Certification	IP64	

Visit [KEF.COM](https://www.kef.com) for more about KEF and its products.

KEF reserves the right, in line with continuing research and development, to amend or change specifications. E&OE.

The Ci speakers that utilise THX in the model name have undergone and passed certified THX approval.

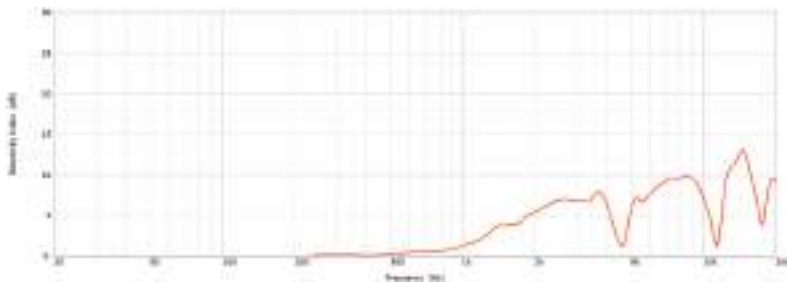
Ci160ER

Architectural Speaker

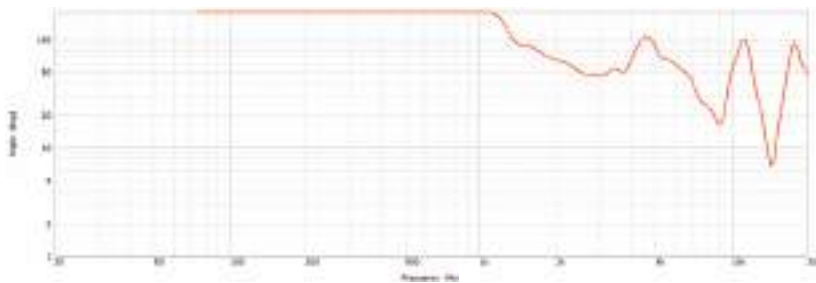


OBSSESSED WITH HIGH RESOLUTION

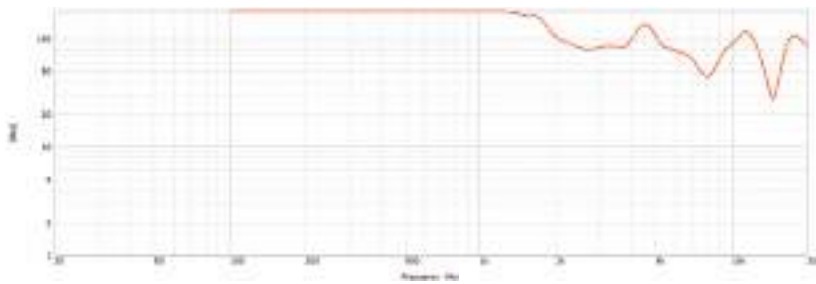
Directivity Index



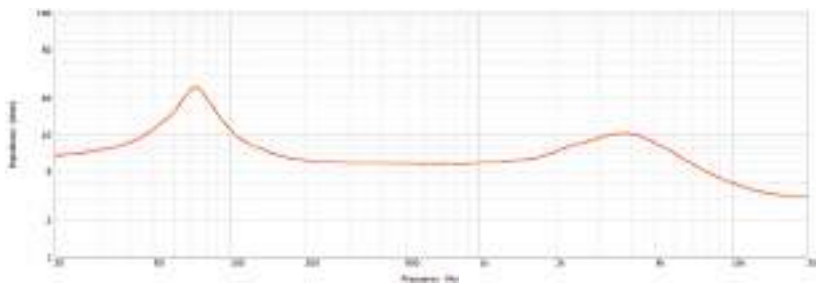
Beamwidth -3dB



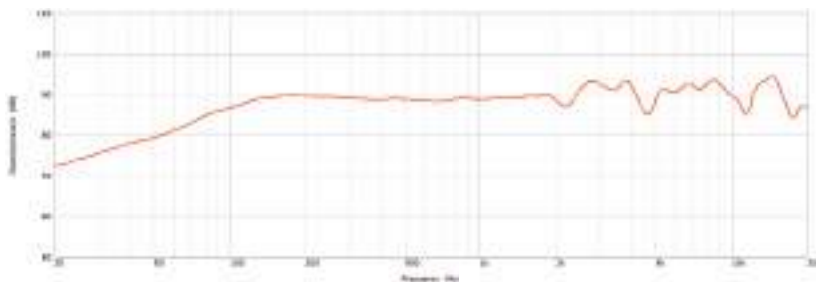
Beamwidth -6dB



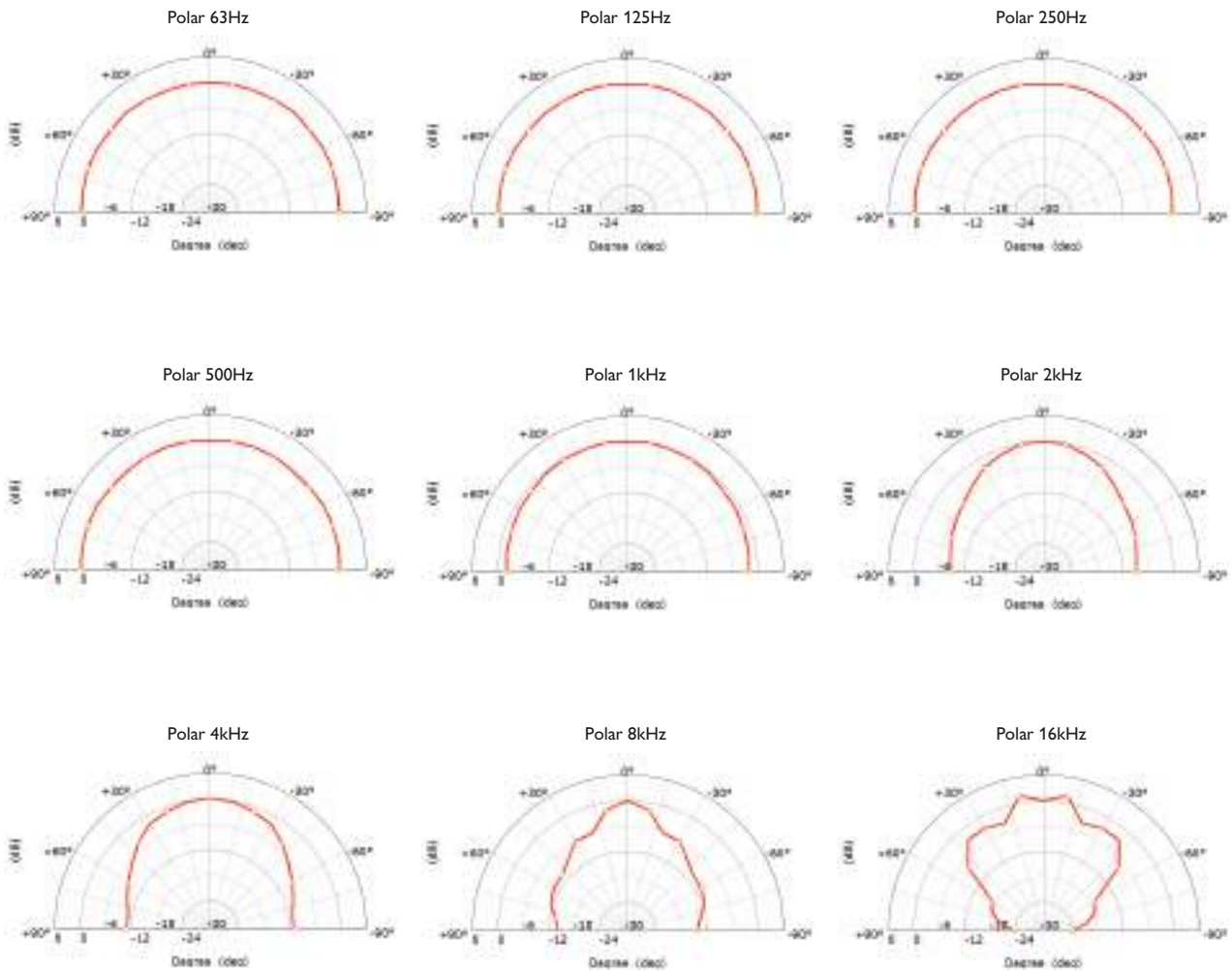
Impedance



Sensitivity (2.83V/1m)



Polar Responses



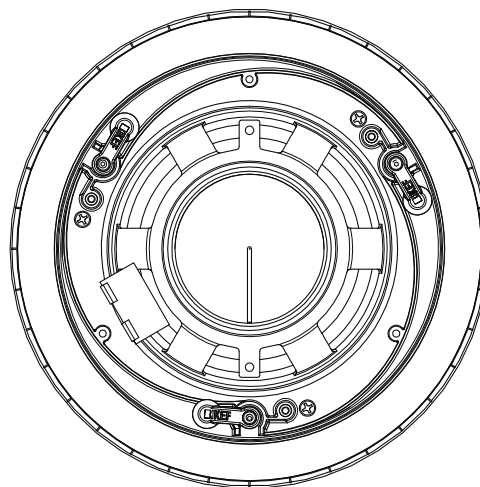
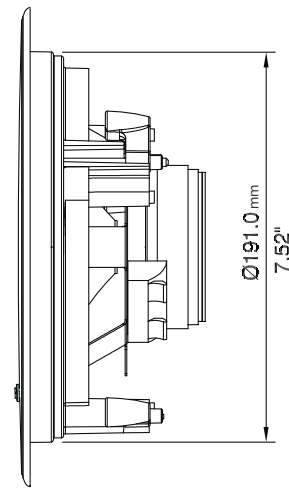
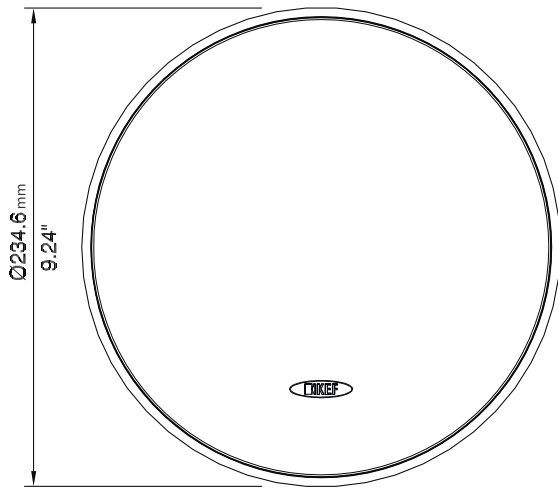
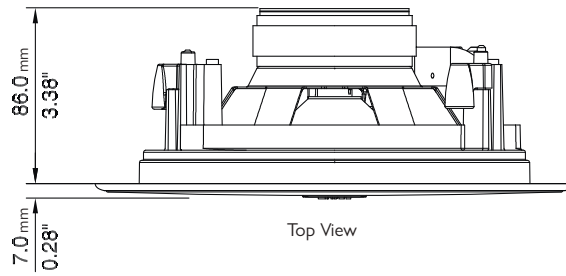
Ci160ER



Architectural Speaker

OBSESSED WITH HIGH RESOLUTION

Mechanical Diagrams



Dimensions in mm (inches)

KEF reserves the right, in line with continuing research and development, to amend or change specifications. E&OE.