

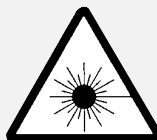
WARNING

To prevent fire or shock hazard, do not expose the unit to rain or moisture.

To avoid electrical shock, do not separate the top and bottom case halves. Refer the servicing to qualified **Rega** dealers only.

The laser component in this product is capable of emitting radiation exceeding the limit for Class 1.

**CLASS 1
LASER PRODUCT**



This appliance is classified as a CLASS 1 LASER product.

CAUTION -	INVISIBLE LASER RADIATION WHEN OPEN AND INTERLOCKS DEFEATED. AVOID EXPOSURE TO BEAM.
VORSICHT!	UNSICHTBARE LASERSTRAHLUNG TRITT AUS. WENN DECKEL GEÖFFNET UND WENN SICHERHEITVERRIEGELUNG ÜBERBRÜCKT IST. NICHT DEM STRAHL AUSSETZEN!
WARNING -	OSYNLIG LASERSTRÅLNING NÄR DENNA DEL ÄR URKOPPLAD. STRÅLEN ÄR FARLIG.
ADVARSEL -	USYNLIG LASERSTRÅLING VED ÅBNING NÄR SIKKERHEDSAFBRYDERE ER UDE AF FUNKTION. UNDGÅ UDSÆTTELSE FOR STRÅLING.
ATTENTION -	RAYONNEMENT LASER ET ELECTROMAGNETIQUE DANGEREUX SI OUVERT AVEC L'ENCLÈCHEMENT DE SECURITE ANNULÉ.
VARO!	AVATTAESSA JA SUOJALUKITUS OHITETTAESSA OLET ALTITINA NÄKYMÄTTÖMÄLLE LASERSÄTEILYLLE. ÄLÄ KATSO SÄTEESEEN.
ADVARSEL -	USYNLIG LASERSTRÅLING NÄR DEKSEL ÅPNES OG SIKKERHEDSLÅS BRYTES. UNNGÅ EKSPONERING FOR STRÅLEN.

This label is located inside the unit.

rega

Contents

The Story.....	2
Design Innovation.....	3
Installation.....	4
Interconnects.....	4
Output Connections.....	5
In Use.....	6-9
Additional CD Functions.....	10-16
The handling of CD's.....	17
Care of the Player.....	18
Troubleshooting.....	19-21
Specifications.....	22
Owners Log.....	23

Mission Statement

Rega's philosophy is to make high quality products at sensible prices, as a means of reproducing music as faithfully as possible. Rega is committed to the design and development of new and existing products, both in hi-fi and other areas, that will perpetuate Rega's values of quality and value for money.

1

rega

The story

To the best of our understanding, there have only ever been five large multinational companies with the technology and knowledge base to develop the remarkably complex operating software for CD players.

Development of this software and chip-sets to operate CD transports was generally curtailed around eight to ten years ago. All development effort was directed towards the design of DVD players and other advanced formats.

Rega and other specialist Hi Fi manufacturers were totally reliant on companies like Sony and Phillips to supply transports and their operating chip-sets.

In 2003 Sony stopped supply and sent the specialist Hi Fi industry into a flurry of activity in search of feasible alternatives. Many manufacturers were able to resource their supply from Far Eastern companies.

Rega has worked hard in locating a British software company who were in the development of a totally new disc operating system. A system, which was highly advanced, even in the early development stages.

Rega is the only manufacturer to develop the unique new disc operating system. Due to ever increasing computer processing power and memory fabrication it has been possible to build in an enormous amount of memory capacity. This has allowed the data retrieval to meet the original CD 'Red Book' specifications without compromise to the musical performance. All previous chip-sets were unable to achieve this due to their limited memory and signal processing capacity.

Rega's new British designed chip set contains over 20MB of memory with 32 bit digital signal processing capacity and **Rega** has used this computing power to give a far greater musical performance.

We hope you enjoy this very special CD player; we have spent a very long time creating it, drawing on all of our 32 years of experience in specialist Hi Fi manufacturing.

rega

2

Design Innovation

Rega were the last major specialist hi-fi manufacturer to make a CD player. We have used this time to observe the development of this medium.

This has encouraged us to develop our own product that comes from our own philosophies concerning sound quality, reliability and value for money.

The **Saturn** CD player has a unique sound that harmonises with the rest of our products and is in contrast to the tonal qualities of most players.

Our proven top loading design remains for several reasons. Firstly, complex motorised tray mechanisms are vulnerable to wear and therefore a cause of unreliability. Secondly, the use of our underslung transport location allows service engineers immediate access to the next most unreliable part of any CD player (the laser diode assembly).

3

regga

Installation

Ensure the operating voltage of the **Saturn** (stated on the rear) is the same as that of your local power supply.

The **Saturn** will work well on most surfaces, such as a shelf, table, stand, or wall bracket.

The **Saturn** should be placed to allow adequate access to the lid and aperture. If access is limited there is a danger of scratching the CD when placing it on the ball chuck system.

Interconnects

An interconnect is included with your **Saturn** CD player, which provides entirely satisfactory performance. Audiophiles may wish to upgrade to a more exotic interconnect at a later stage, such as Rega's **Couple**.

regga

4

Output Connections

Outputs are made via RCA (Phono) type connector and the 'Tos-link' optical connection. The sockets on the **REGA** products are clearly marked to help identify them.

Line Out: For output to an audio amplifier.

Right: Always the lower row and marked in **RED**.

Left: Always the upper row and marked in **WHITE**.

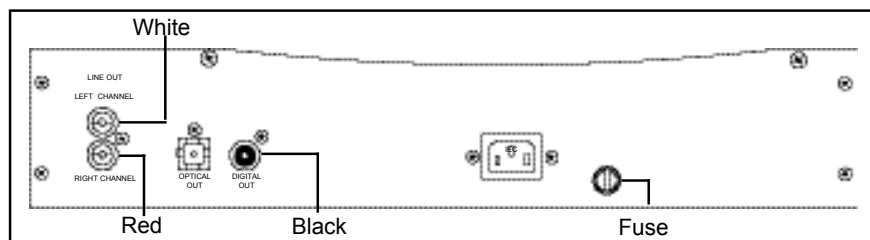
CAUTION: SOME AMPLIFIERS AND INTERCONNECTS HAVE BLACK COLOUR CODING FOR THE LEFT CHANNEL.

Digital Out: for output to digital components such as D.A converter, digital processor, DAT, or MD.

Always check that the connecting component is compatible with 44.1k coaxial S/PDIF input)

IMPORTANT: ALWAYS TURN OFF THE PLAYER WHEN CHANGING LEADS.

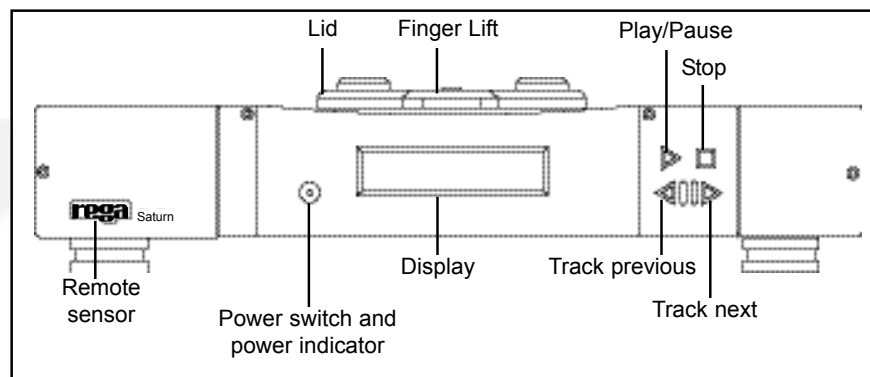
Rear Panel Connections



5

rega

In Use



Powering up

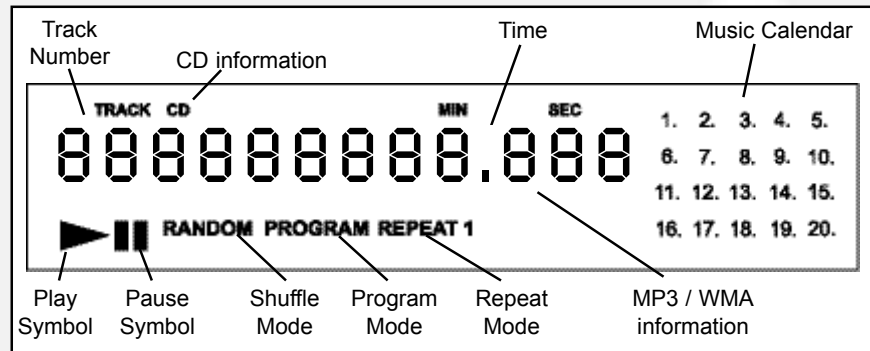
Press the power switch on the front panel, the power indication LED on the power switch will illuminate and the display shows 'REGA SATURN'.

If there is a disc in the player it will initialise it.

If there is no disc in the player, "NO DISC" is displayed.

rega

6



Loading a disc.

Turn on - with lid closed display shows "REGA SATURN".

Open lid and place CD onto three point ball chuck.

Close lid and wait for the player to initialise the disc (initialisation can take up to 12 seconds) this checks to see if it's MP3, WMA, CDA and WAV. (The **Saturn** locks out both remote and keypad functions whilst initialising the disc until track 1 total time is displayed.)

The display will then show the contents of the disc.

CDA's will show - Total tracks, total time and CD symbol followed by track 1 and time

MP3's will show - Total tracks, total albums and MP3 followed by track 1 album 1 and zero time.

7

rega

3. WMA - Total tracks, total albums and WMA followed by track 1 album 1 and zero time, spinning to remove the disc.

4. Combination - Total tracks, total albums and MP3/WMA followed by track 1 album 1 and zero time.

All functions will show the music calendar however it will depend on the disc loaded into the player to what this means.

1. CDA - Total number of Tracks on CD.

2. MP3 or WMA - Total number of track in the current album

Playing or pausing the Disc.

After disc has been initialised select play function on either the remote or front panel. The disc will start playing from track 1 of the first album on the disc regardless of disc content.

The Display will show -

1. The word PLAY will appear briefly showing it is about to play the track.

2. MP3 and WMA will show the name of the track and track number.

3. The play symbol will then appear.

4. The track number and time played. It will also show the Album number if MP3 or WMA was initialised.

NB: If playing CDR's they must be recorded at no greater than 8x as we cannot guarantee the readability of the disc.

rega

8

Once playing the CD you can then activate the Pause function by pressing the pause button on the remote or pressing play/pause button on the front panel. Pause will then hold track position until the play button is pressed on either the remote or front panel.

Once play is activated again the display shows all information about the track and will continue to play from held position.

Stopping the player

Pressing the stop button on either the remote or front panel will stop the current action and return the player back to track 1 of album 1.

Whilst in 'stopping mode' the player locks out all other functions.

Track Previous

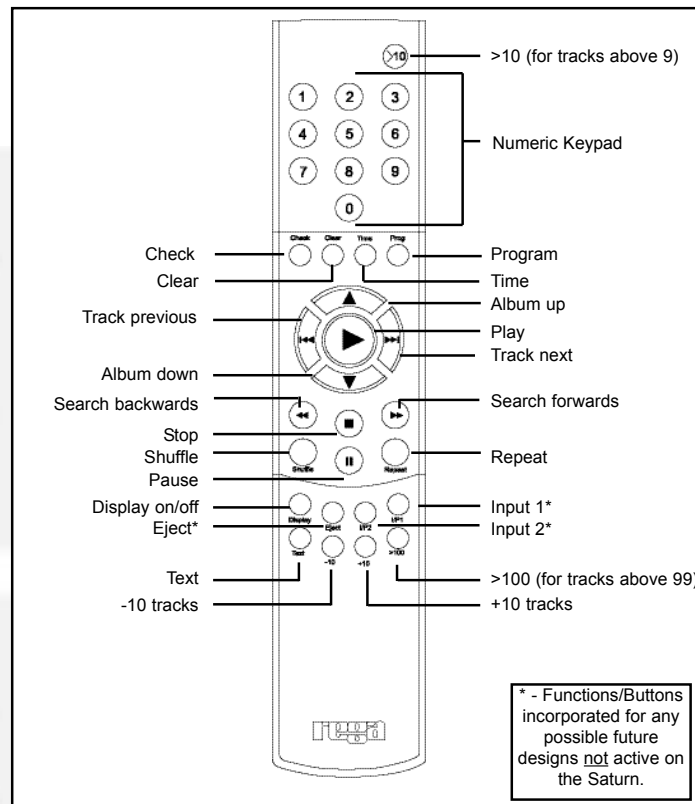
When pressed while the disc is playing, the current track will start again from the beginning. Pressing again in quick succession will take you to the start of the previous track.

Track Next

Pressing once while the disc is playing, the next track will start from the beginning. Pressing again takes you to the beginning of the next track after that, etc.....

If the **TRACK** buttons are pressed in pause and stop modes, a specific track can be selected, and when the **PLAY** button is pressed the selected track will start from the beginning.

Additional CD Functions (Activated by the Remote)



rega

10

Remote Functions

Play, pause, stop, track previous, and track next

The **PLAY** and **PAUSE** buttons on the Remote Control are the same as **PLAY/PAUSE** on the front panel except they have been separated.

Stop, track previous, and track next work in the same way as on the front panel of the player. (See pages 8 & 9.)

Search Back, Search Forward

Pressing the **SEARCH BACK / SEARCH FORWARD** buttons in play mode, plays the disc at high speed, allowing you to find a specific position in a track.

In pause mode, the track is scanned at a higher speed without playing music.

To stop the search press the **SEARCH BACK / SEARCH FORWARD** button again.

Numeric Keys

You can start from the beginning of a desired track by pressing the corresponding **NUMERIC KEY**. If the track number is greater than 9 press **>10** button followed by the number (ie for **15** press **>10** then **1** then **5**) if the track number is greater than 99 press **>100** button followed by the numbers you require (ie for **105** press **>100** then **1** followed by **0** and **5**)

Once you have entered the track number press play to start the track.

Shuffle

To play tracks in a random order press **SHUFFLE** then press **PLAY**.

To play tracks in a random order whilst in play mode, press the **SHUFFLE** button once. 'SHUFFLING' will be displayed and 'RANDOM' will be highlighted, the tracks will be played in a sequence generated by the player.

To cancel shuffle play, press the **SHUFFLE** button again. Play will continue in the discs original sequence, after current track being played has finished.

Repeat

To repeat track, album or disc press the repeat button until the mode is selected.

Pressing the repeat button in quick succession will toggle between the various repeat functions.

When the disc is played in...	The Saturn repeats...
Continuous Play	Track / Album / Disc
Shuffle Play	Track / Disc
Program play (see page 15)	Program Again

NB: Please give the Saturn enough time to process the information each time a new or different function is selected.

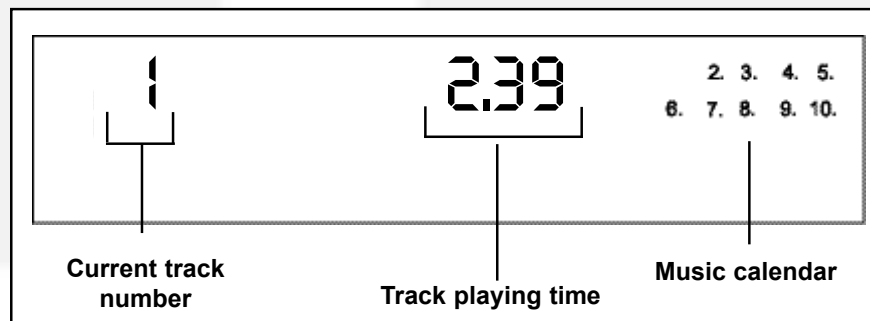
rega

12

Display information while playing a disc.

While Playing a disc, the display shows the current track number, playing time, and the music calendar.
The track numbers in the music calendar disappear after they are played.

The 'TEXT' button on the remote can be pressed to show information on WMA and MP3 files.



Turning off the display

Pressing the 'Display' button on the remote once will turn off the display pressing it again will turn it back on.

Displaying remaining track time

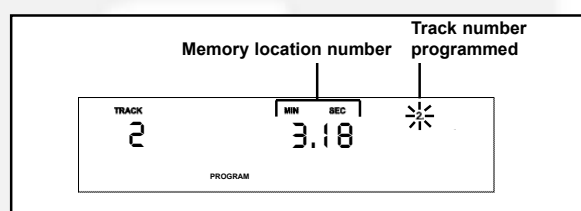
Checking the remaining playing time of the track is done by pressing the **TIME** button on the remote whilst the CD is playing.

This button can be used to alternate between the track playing time and the remaining playing time of the track.



NB: The 'TIME' function does not work for MP3 or WMA files.

Creating a program



The program function allows you to program up to 99 tracks from a disc or album in any order you specify.

- 1) Press **PROGRAM** to create your new program list. "PROGRAM" will appear on the display.
- 2) When the first programme location appears you can enter the required track number, continue this until your program is complete up to a maximum of 99 locations.
- 3) Use the **>10** and **>100** buttons to enter track numbers above 9 and 99.

Creating a Program (continued)

4) If you enter the wrong track number it can be deleted by pressing the clear button. This will clear the last location entered.

5) Press 'program' again to finish programming. The display will now show 'RECEIVED'.

6) Pressing **PLAY** will activate your programme.

7) If program is pressed again you can enter further tracks from the last location in your program. This can be done either when the **Saturn** is playing your program or when stopped.

8) To clear your programs make sure the **Saturn** has stopped then press the clear button.

The display now shows the first track that was entered into your program.



The handling of CD's

To keep the CD clean, handle by its edge only. Do not touch the surface; natural oils from skin can stop the laser from reading the disc accurately.

Do not expose the disc to bright sunlight, or leave near hot places such as electrical equipment or in a parked car. Excess heat can cause the disc to warp.

Do not use any cleaning fluids or anti-static sprays on the disc, they can damage the disc and the player.

Store the disc in its case when not in use to prevent it from becoming scratched.

Care of the Player

WARNING

Misuse of the player could invalidate your Rega warranty.

Do not touch the lens or electronic parts inside the player, it is a very sensitive optical device and is easily damaged. If dirt gets on the lens, the player may not work.

Do not attempt to clean the lens or lubricate in any way. Fluids and abrasive materials could easily damage the lens. Your REGA dealer will be trained in cleaning this component, but provided you take care with your player, it should not need any servicing.

Do not leave the lid open, as dust will get into the player and onto the lens.

Do not drop objects into the player. If any objects fall into the player, switch off and disconnect from the mains supply immediately, and contact your REGA dealer. Do not open the case or stick implements into it to retrieve the item.

If you are not going to use the player for a long time, we recommend that you switch it off.

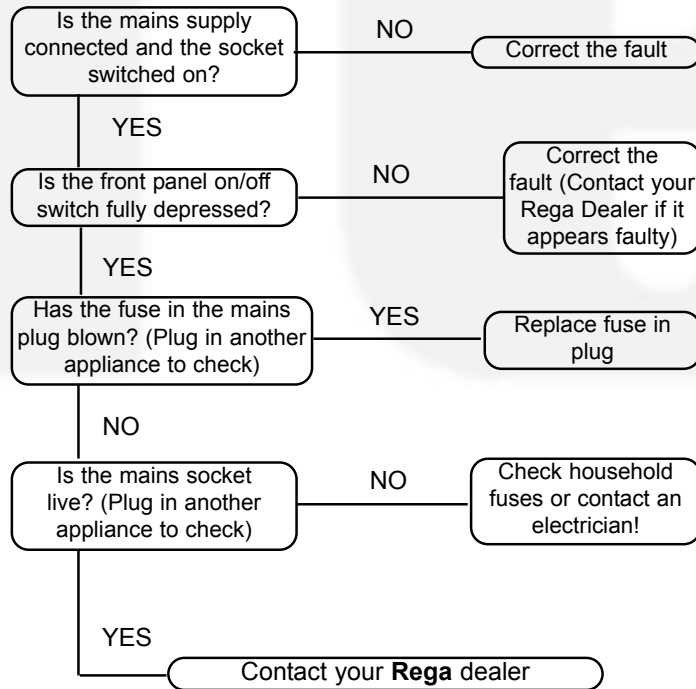
Always pull the plug itself when disconnecting from the wall socket, never the cord.

rega

18

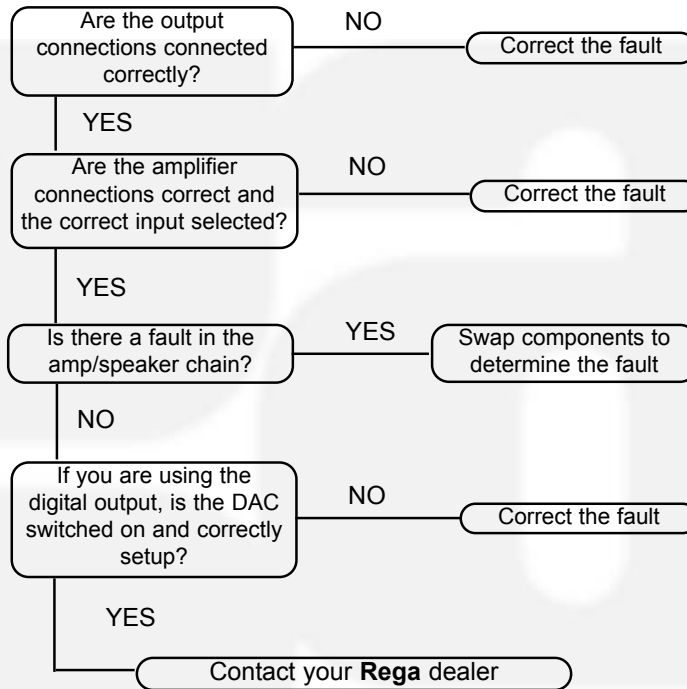
Troubleshooting

(No power, power switch LED does not light up)



Troubleshooting

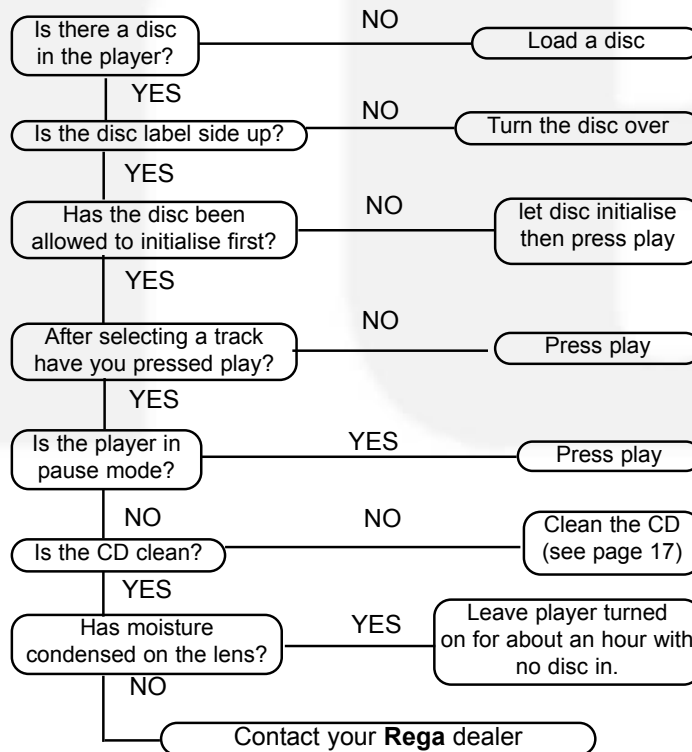
(Power on, no output)



rega

Troubleshooting

(Power on, power switch LED and display on, but CD does not play)



Saturn Specifications

Laser	Semiconductor laser
Wavelength	780nm
Line Output Maximum Level	2V (load impedance minimum 10k Ω)
Digital Output Maximum Level	0.5V (load impedance 75 Ω)
Digital Sampling Frequency	44.1kHz
Mains Voltages	230V (minimum 190V maximum 250V) @ 50/60Hz 115V (minimum 95V maximum 125V) @ 50/60Hz
Power Consumption	14W
Dimensions	435Wx100Hx270D
Required Space for operation	435Wx180Hx315D
Mains fuses	230V @ 250mA 115V @ 500mA
CDP Remote Batteries	AAA (1.5) x 2

NB: Although the remote control supplied as standard is specific to this model and is necessary to access the advanced functions of the player the Rega 'Solar' universal remote will control all the basic functions of the **Saturn**.

rega

22

Owner's Log

(1)
Owner.....
Date.....
Where Purchased.....
.....

(2)
Owner.....
Date.....
Where Purchased.....
.....

(3)
Owner.....
Date.....
Where Purchased.....
.....