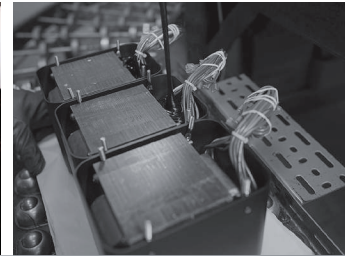


MC275 power amplifier

- This tube power amplifier has all the features to meet the needs of today's music enthusiast, while preserving the qualities that have made the MC275 the most revered McIntosh tube amplifier.
- This sixth generation MC275 has many subtle enhancements from the previous release that greatly improve performance. Combined with the widest bandwidth McIntosh output transformer design, the MC275 features tauter bass control and thermally quiet circuit design. The result is pure music.
- McIntosh patented, gold plated, speaker binding posts assure the best connection to all speaker cables, while high quality balanced and unbalanced input connectors enhance signal transfer from the connected preamplifier.
- The seven small tubes are LED illuminated to indicate the amplifier's functional status. Power Control is used to remotely control tube illumination from a McIntosh preamplifier.



The Classic McIntosh Amplifier

McIntosh®

LEGENDARY PERFORMANCE™

www.mcintoshlabs.com

MC275 power amplifier

Power Output:

75 Watts Minimum sine wave continuous average power output per channel, stereo, with both channels operating

Mono Parallel:

150 Watts @ 2, 4 and 8 ohms

Output Load Impedance:

Terminals for 4, 8 and 16 Ohms Stereo

Rated Power Bandwidth:

20Hz to 20KHz

Total Harmonic Distortion:

0.5% maximum harmonic distortion at any level from 250 milliwatts to rated power

Overall Dimensions (W x H x D):

21 1/2" (54.6cm) (including cables) x 8 1/2" (21.6cm) (including feet) x 12" (30.5cm)

Weight:

67 lbs. (30.5kg) net; 75 lbs. (34.1kg) in shipping carton

Circuit Design:

The All Tube Circuit Design allows only the tubes to amplify the input signal, for the best tube amp listening experience.

Sentry Monitor:

The High-Speed Sentry Monitor protection circuitry shuts down the amplifier in case of a rare tube malfunction before additional damage can occur. The small tubes closest to the defective output tube set will illuminate Red to indicate which pair of output tubes need replacing. If speaker wires are inadvertently shorted, Sentry Monitor will shut the amp off and the power LED on the input side of the amp will flash. Once the speaker wires are corrected, the amplifier will power back up.

Tube Illumination:

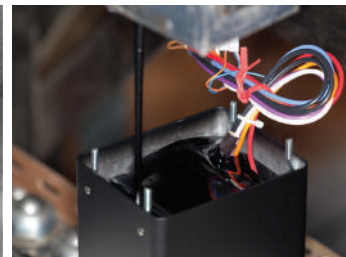
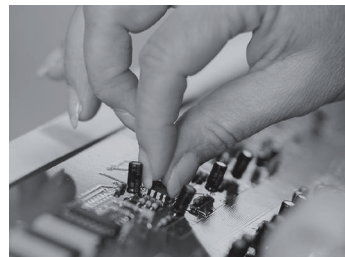
The seven small tubes sequentially warm up with an intense amber hue until the amplifier reaches operational stability, causing the tubes' illumination to change to green. When the small tubes are green, voltages are stabilized and the amplifier is ready to enjoy.

Monophonic Operation:

MC275 is designed to use as a single chassis 150 watt mono power amplifier. A Gold Plated mono speaker jumper is included to connect the two channels together for monophonic use when high power is needed for larger speakers or higher playback volumes.

For the Consumer's Protection:

In order to ensure the highest level of customer satisfaction, "new" McIntosh products may only be purchased over-the-counter or delivered and installed by an Authorized McIntosh Dealer. McIntosh products that are purchased over the Internet, by phone or mail order are presumed to be "used" and do not qualify for any McIntosh Warranty. McIntosh does not warrant, in any way, products that are purchased from anyone who is not an Authorized Dealer or products that have had their serial number altered or defaced.



Companion Products

The McIntosh C2300 Vacuum Tube Preamplifier, MCD500 SACD/CD Player, MR88 AM/FM/XM/HD Tuner, MT10 Turntable, MEN220 Room Correction and the MPC1500 Power Controller are logical companions for the MC275 Vacuum Tube Power Amplifier. Your Authorized Dealer can provide additional information.

To learn more, please call us at 1.800.538.6576.

McIntosh®

LEGENDARY PERFORMANCE™

www.mcintoshlabs.com