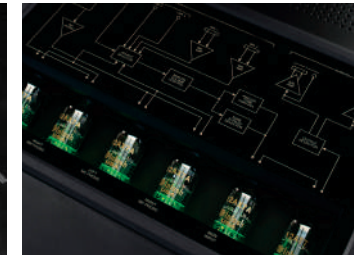
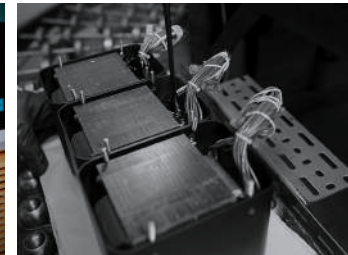


C12000 stereo preamplifier

- The C12000 Preamplifier is the next generation of our acclaimed two-chassis preamplifier design. This unusual but effective design allows the audio section to be completely separated from the control and power section, delivering the purest sound reproduction possible.
- Inside each the C12000C Controller and C12000ST Preamplifier, the left and right channels are electrically and mechanically isolated from each other to allow for true dual mono operation.
- Includes 12 analog inputs: six balanced, four unbalanced, and two unbalanced phono inputs. The phono inputs are no longer set up as dedicated for Moving Coil or Moving Magnet cartridges; instead, both are configurable as either Moving Coil or Moving Magnet with adjustable Capacitance and Resistance Loading, along with adjustable Gain.
- Offers both vacuum tube and solid-state output. Six vacuum tubes power the high-level preamplifier section with two 12AT7 tubes and one 12AX7A tube assigned to each the left and right channel. Solid-state output is via a discrete balanced op-amp. Phono stage utilizes four 12AX7A vacuum tubes, with two tubes used per channel in a fully balanced configuration that incorporates RIAA equalization.
- Four total outputs: one balanced vacuum tube; one balanced solid-state; one fixed unbalanced; and one programmable unbalanced (can be either vacuum tube or solid-state).
- Other features: High Drive headphone amplifier that has plenty of power and flexibility to drive a wide range of headphones. Power Control can automatically turn other connected McIntosh components on and off. Data Ports can send remote control commands to connected sources.



Maximum Control and Configurability

McIntosh[®]

LEGENDARY PERFORMANCE[®]

www.mcintoshlabs.com

C12000 stereo preamplifier

Frequency Response:

+0, -0.5dB from 20Hz to 20kHz
+0, -3dB from 15Hz to 100kHz

Total Harmonic Distortion:

High Level: 0.005%; Phono: 0.05%

Maximum Output Voltage:

Balanced: 20 Vrms; Unbalanced: 10 Vrms

Signal to Noise Ratio:

High-Level: 107dB
Phono (Moving Coil): 79dB
Phono (Moving Magnet): 83dB

Inputs:

6 Balanced
4 Unbalanced
2 Phono (configurable as either
Moving Coil or Moving Magnet)

Outputs:

1 Balanced (Solid State)
1 Balanced (Vacuum Tube)
1 Unbalanced (Fixed)
1 Unbalanced (configurable as either
Solid State or Vacuum Tube)

Overall Dimensions (W x H x D):

Each module: 17.5" (44.45cm) x 6"
(15.24cm) x 18" (45.7cm)

Weight:

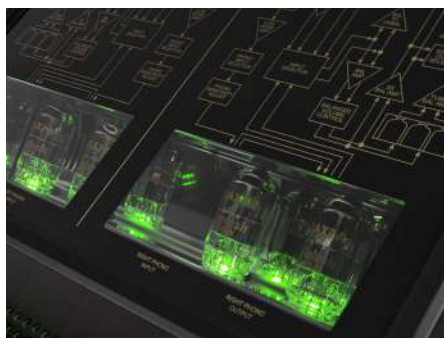
C12000C: 27 lbs (12.3 kg) net,
42 lbs (19.5 kg) in shipping carton
C12000ST: 25 lbs (11.3 kg) net,
40 lbs (17.7 kg) in shipping carton

For the Consumer's Protection:

In order to ensure the highest level of customer satisfaction, new McIntosh products may only be purchased from an Authorized McIntosh Dealer; and, with certain limited exceptions may only be purchased over-the-counter or delivered and installed by the Authorized McIntosh Dealer. McIntosh does not warrant, in any way, products that are purchased from anyone who is not an Authorized McIntosh Dealer, or that have had their serial numbers altered or defaced.



Top Left: C12000ST Preamplifier module. **Top Right:** C12000C Controller module. **Bottom Left:** The 12AX7A and 12AT7 vacuum tubes that power the high-level section are visible through the front of the C12000 Preamplifier module. **Bottom Right:** The four 12AX7A vacuum tubes that power the phono stage are visible from the top of the C12000 Preamplifier module.



Companion Products

The MC2KW or MC3500 Mk II Amplifier, D1100 Digital Preamplifier, MT10 Turntable, MCD600 SACD/CD Player, MR87 AM/FM Tuner, MS500 Music Streamer, MEN220 Room Correction System, MPC1500 Power Controller, and XRT1.1K or XRT2.1K Loudspeakers are logical companions for the C12000 Stereo Preamplifier. Your Authorized Dealer can provide additional information on other McIntosh product combinations.

To learn more, please call us at 1.800.538.6576.

McIntosh®

LEGENDARY PERFORMANCE®

www.mcintoshlabs.com