

# Motion 40

## SPECIFICATIONS

### Frequency Response

40–25,000 Hz ± 3 dB

### Dispersion

80° x 80°

### High Frequency Driver

1" x 1.4" (2.6cm x 3.6cm) Folded Motion Transducer with 5.25" x 1.75" (13.3cm x 4.4cm) diaphragm.

### Mid Frequency Transducer

5-1/2" (14cm) aluminum cone woofer in a non-resonant asymmetrical chamber format. Cast polymer basket. Rigid structured dust cap reduces cone break-up

### Low Frequency Transducer

Two 6-1/2" (16.5cm) aluminum cone woofers in a non-resonant asymmetrical chamber format. Cast polymer basket. Rigid structured dust caps reduce cone break-up

### Sensitivity

92 dB @ 2.83 volts/meter

### Impedance

4 Ohms. Compatible with 4, 6, or 8 Ohm rated amplifiers.

### Recommended Amplifier Power

20 – 300 watts

### Crossover Frequency

500 & 2,600 Hz

### Cabinet

Ported

### Components

Precision Vojtko™ with custom air core coil and low DCR steel laminate inductors. Polyester film capacitors in series and low DF electrolytic capacitors in parallel

### Inputs

Custom 5-way bi-wire tool-less binding posts

### Weight

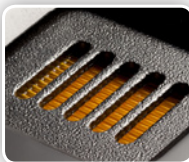
49 lbs. (22.2 kg)

### Dimensions

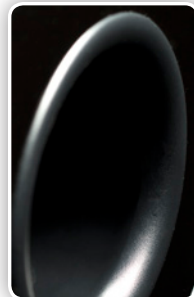
42.5" x 7.6" x 12.8"

(107.9cm x 19.2cm x 32.6cm)

Specifications are subject to change without notice.



The elegant Motion 40 speaker features our advanced resolution Folded Motion™ tweeter, a 5-1/2" aluminum cone midrange and two 6-1/2" aluminum cone bass woofers.



### Audiophile Performance without the Audiophile Price

Part of the secret to the Motion 40's outstanding performance lies in the dual oversized aluminum-cone woofers paired with a rear-firing bass port. The oversized woofer design creates increased cone area delivering higher output and audibly richer, deeper bass performance than it's slightly smaller sibling, the Motion 20. The addition of a dedicated mid woofer also promotes an even more open, revealing and authentic midrange. Pairing this powerful trio with our patented Folded Motion tweeter creates audible acoustic alchemy across the frequency spectrum and offers an expansive soundstage, richly detailed highs, and an open & revealing midrange.